

Frances Willson Thompson Library, University of Michigan – Flint

2 AM Pilot Project

Winter 2015

Elizabeth Svoboda
4-29-2015

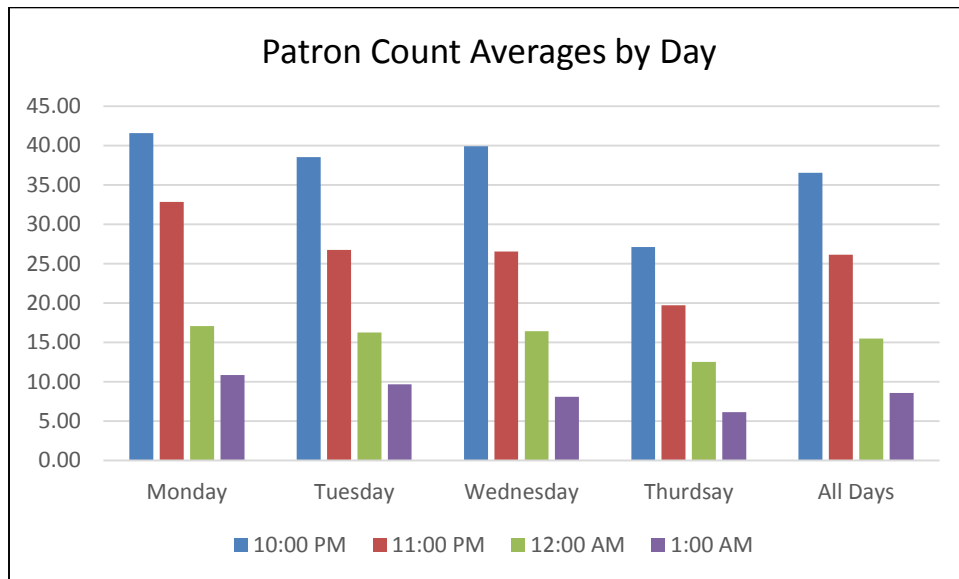
Contents

Patron Count Averages Whole Semester (January 6 – April 28, 2015)*	2
Days with High Counts at 12 AM or 1 AM.....	2
Patron Count Averages 1 st Half of Semester (January 6 – February 26, 2015)	3
Patron Count Averages 2 nd Half of Semester (March 9 – April 28, 2015)	4
Hourly Averages by Week.....	5
Hourly Patron Count by Date.....	6
Observations	7
Conclusions	7

Patron Count Averages | Whole Semester (January 6 – April 28, 2015)*

	10 PM	11 PM	12 AM	1 AM
Monday	41.58	32.83	17.08	10.83
Tuesday	38.53	26.73	16.27	9.67
Wednesday	39.93	26.53	16.43	8.07
Thursday	27.13	19.73	12.53	6.13
All Days	37.20	26.59	15.48	8.57
Median	37	25	13	7
Minimum	7	2	0	0
Maximum	90	66	39	30

*Excludes Spring Break (March 2 – 5) and 24 Hour Library (April 13 – 15); the library was open until 2 AM for 56 days during the Winter 2015 semester.



Days with High Counts at 12 AM or 1 AM

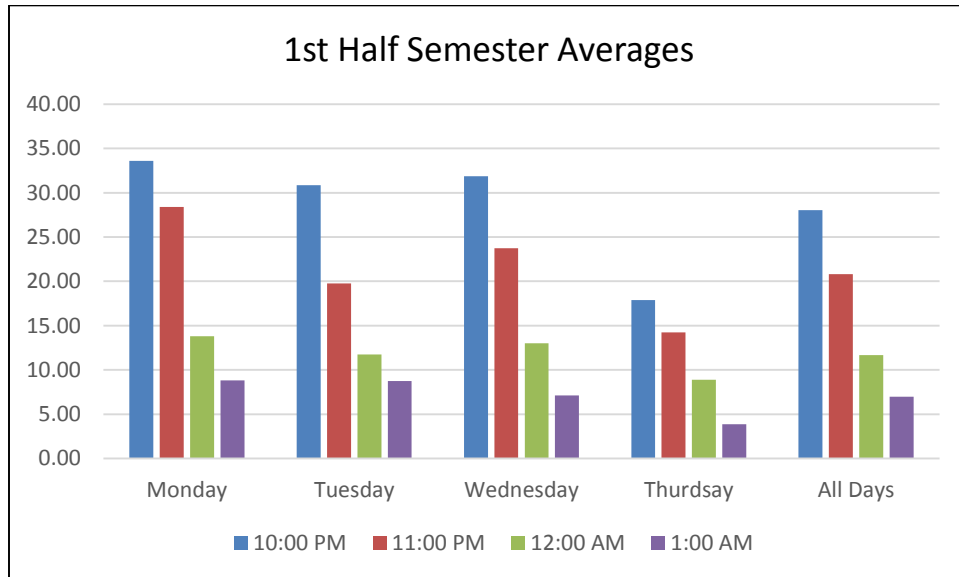
	1st Half of Semester	2nd Half of Semester	Whole Semester
10 – 19 @ 12 AM	11	11	22
20 – 29 @ 12 AM	3	6	9
30+ @ 12 AM*	1	6	7
10 – 19 @ 1 AM	6	8	14
20 – 29 @ 1 AM	1	2	3
30+ @ 1 AM*	0	1	1

*All 30+ counts at 12 AM and 1 AM during the second half of the semester occurred in April; all but 1 30+ count at 12 AM occurred during final exams.

Patron Count Averages | 1st Half of Semester (January 6 – February 26, 2015)

	10 PM	11 PM	12 AM	1 AM
Monday	33.60	28.40	13.80	8.80
Tuesday	30.88	19.75	11.75	8.75
Wednesday	31.88	23.75	13.00	8.75
Thursday	17.88	14.25	8.88	3.88
All Days	28.03	20.83	11.66	6.97
Median	28	21	11	6
Minimum*	7	2	0	0
Maximum	53	41	38	21

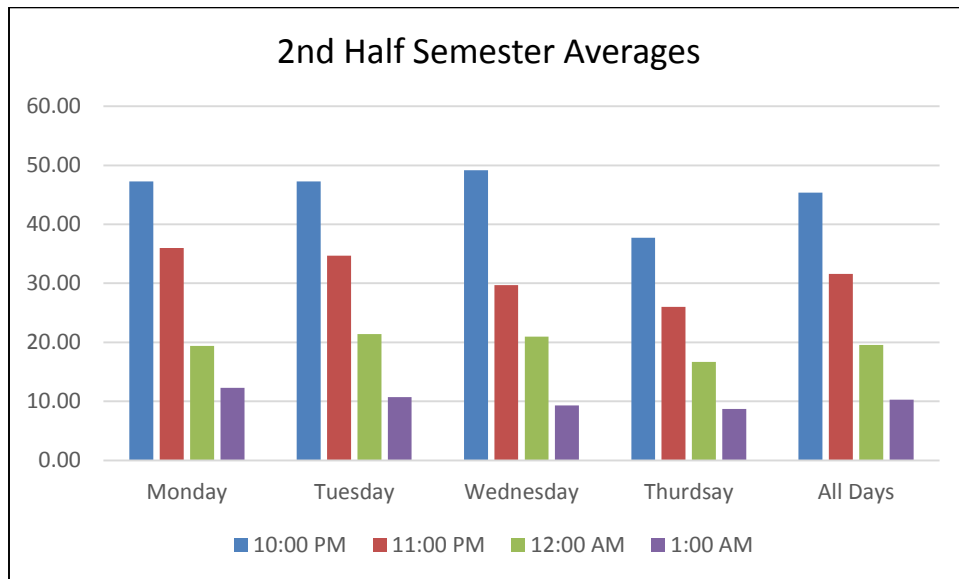
*There were 2 days with 0 at 12 AM and 3 days with 0 at 1 AM; all occurred in the first two weeks of the semester.



Patron Count Averages | 2nd Half of Semester (March 9 – April 28, 2015)

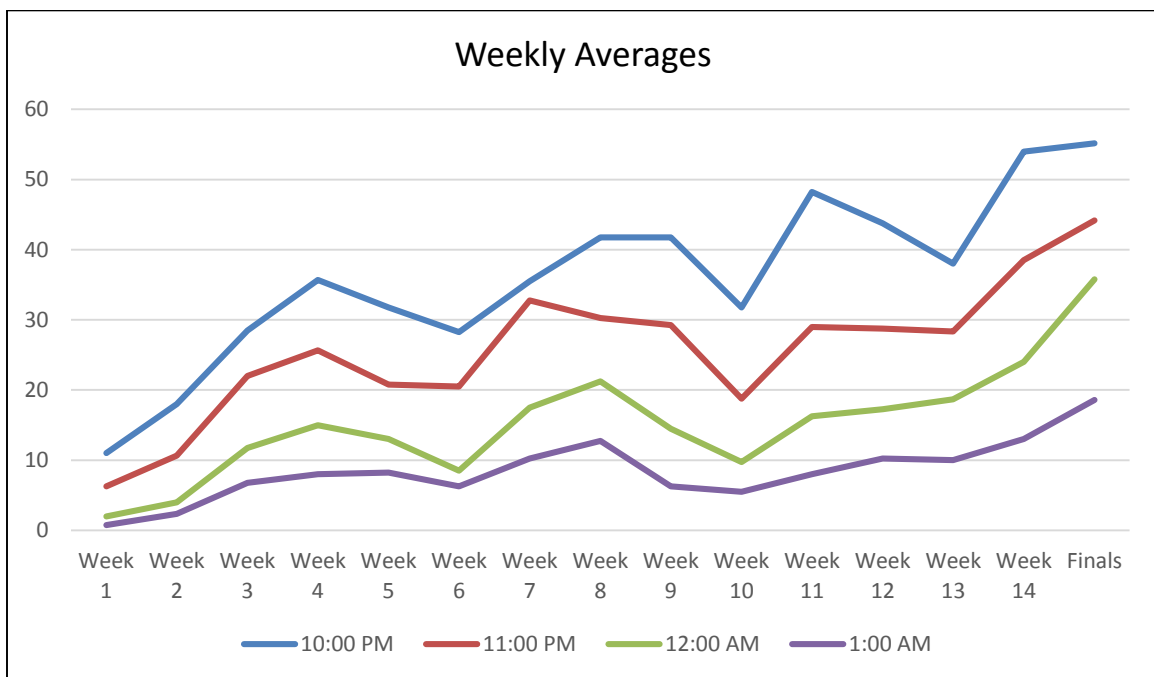
	10 PM	11 PM	12 AM	1 AM
Monday	47.29	36.00	19.43	12.29
Tuesday	47.29	34.71	21.43	10.71
Wednesday	49.14	19.71	21.00	9.33
Thursday	37.71	26.00	16.71	8.71
All Days	45.36	31.61	19.59	10.30
Median	47	35	18	8
Minimum	17	10	6	3
Maximum*	90	66	39	30

*All maximums were set on either Wednesday, April 22 (the second Study Day) or Thursday, April 23 (the first day of final exams).

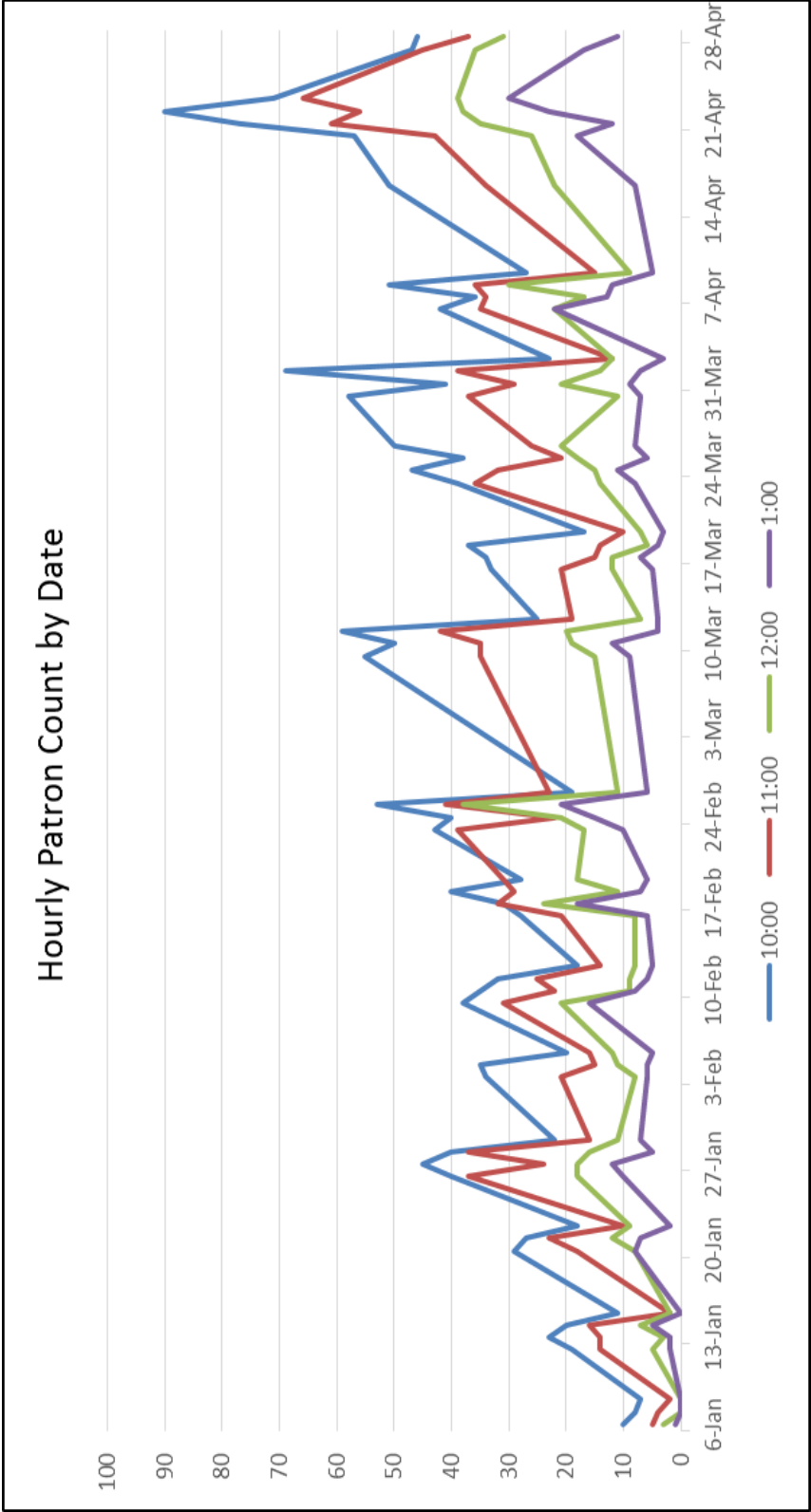


Hourly Averages by Week

Week	10 PM	11 PM	12 AM	1 AM
1 (Jan. 6 – 12)	11	6.25	2	0.75
2 (Jan. 13 – 15)	18	10.67	4	2.33
3 (Jan. 20 – 26)	28.5	22	11.75	6.75
4 (Jan. 27 – 29)	35.67	25.67	15	8
5 (Feb. 3 – 9)	31.75	20.75	13	8.25
6 (Feb. 10 – 16)	28.25	20.5	8.5	6.25
7 (Feb. 17 – 23)	35.5	32.75	17.5	10.25
8 (Feb. 24 – Mar. 9)	41.75	30.25	21.25	12.75
9 (Mar. 10 – 16)	41.75	29.25	14.5	6.25
10 (Mar. 17 – 23)	31.75	18.75	9.75	5.5
11 (Mar. 24 – 30)	48.25	29	16.25	8
12 (Mar. 31 – Apr. 6)	43.75	28.75	17.25	10.25
13 (Apr. 7 – 9)	38	28.33	18.67	10
14 (Apr. 16 – 20)	54	38.5	24	13
Finals (Apr. 21 – 29)	55.17	44.17	35.8	18.6



Hourly Patron Count by Date



Observations

1. The need for late night library hours increased towards the end of the semester.
 - a. During the second half of the semester, 23 out of 27 days had double digit counts at 12 AM, compared to 15 out of 29 in the first half of the semester.
 - b. During the second half of the semester, 11 out of 27 days had double digit counts at 1 AM, compared to 7 out of 29 in the first half of the semester.
 - c. While the number of high count days increased during the second half of the semester, the number of 12 AM counts increased much more than the 1 AM counts.
2. The highest counts and the largest number of consistently high counts occurred during the final exams period.
 - a. All five days had 30+ counts at 12 AM.
 - b. At 1 AM, one day had 30+, one day had 20+, and three days had 10+ counts.
3. There was a consistent drop in numbers, often by 50%, between the midnight and 1 AM counts.
4. Mondays and Wednesdays typically had higher counts than Tuesdays or Thursdays, although the averages between Monday, Tuesday, and Wednesday evened out in the second half of the semester.
5. During the regular semester, Thursdays consistently had a low count, possibly due to the lack of classes held on Friday.
6. There were a number of international students who were late night regulars over the semester and lived close to campus.

Conclusions

1. The patron counts collected over the Winter 2015 semester do not show enough demand for the library to remain open past midnight during the regular semester.
2. There is a demand for later hours in the week before and during final exams. The library should continue to offer extended hours during final exams, in addition to the 24 Hour Library event.